



# ORGANIZATIONAL FRAMEWORK FOR IMPLEMENTATION



## REGIONAL BIKE PLAN EXECUTIVE SUMMARY for YADKIN COUNTY

This plan identifies opportunities for improving bicycling in the Yadkin Valley region, for safety, health, recreation, transportation, tourism, and economic development.



**NCDOT DIVISIONS 9, 11, & 12**

- Become familiar with the recommendations in this plan
- Communicate with MPOs & RPOs on projects that could potentially incorporate bicycle facilities, especially on roadways with recommendations from this plan
- Coordinate with MPOs & RPOs on STBG-DA funds and the STI process for bicycle projects

**MUNICIPAL & COUNTY PARTNERS**

- Include funding for bicycle projects in Capital Improvement Programs (CIPs), to provide a match for outside funding sources when required
- Coordinate with MPOs & RPOs to leverage local bicycle project funding on specific projects
- Coordinate with NCDOT Division 9, 11, or 12 for bicycle facilities as incidental projects during roadway reconstruction and resurfacing
- Update local development regulations to better support bicycle facility development
- Promote public awareness and use of local and regional bikeways through local tourism and economic development agencies
- Provide GIS updates to MPOs & RPOs for bicycle-related projects (completed or in-development)

**LOCAL RESIDENTS AND CIVIC ORGANIZATIONS**

- Help build public support for bicycling in the region and for funding bicycle projects and programs
- Reach out to elected officials and other decision-makers to let them know you and your organization support bicycling in the Yadkin Valley Region

**REGIONAL PARTNERS**  
Continued support, coordination, & outreach for bicycling from:

- NC State Parks
- Tourism & Visitors Bureaus
- Healthcare Providers and Advocates
- School Representatives
- Private Developers
- Active Routes to School
- Neighboring Jurisdictions

*Acronym Legend:*  
 NCDOT: North Carolina Department of Transportation  
 IMD: Integrated Mobility Division  
 MPO: Metropolitan Planning Organization  
 RPO: Rural Transportation Planning Organization  
 CRTPO: Charlotte Regional Transportation Planning Org.  
 STBG-DA: Surface Transportation Block Grant - Direct Attributable  
 STI: Strategic Transportation Investments  
 MTP: Metropolitan Transportation Plan  
 CTP: Comprehensive Transportation Plan  
 GIS: Geographic Information Systems

**EXPERT ADVISORS**  
Assist project partners by providing guidance on project development, and by providing bicycle & trail design services

- American Planning Association
- Association of Pedestrian & Bicycle Professionals
- American Trails
- The Rails-to-Trails Conservancy
- Velo Girl Rides (Cycling Tourism)
- Private Consultants

### OVERVIEW

This plan sets a framework for improving the quality and safety of bicycling through new and improved infrastructure, policies and programs, for all types of bicyclists. The study area covers Surry, Stokes, Yadkin, Forsyth, and Davie counties as well as part of Iredell County. The year-long planning process included an open and participatory process, guided by a Steering Committee of regional representatives, with in-person public outreach opportunities in each county.

A more bicycle-friendly Yadkin Valley region would offer multiple quality of life benefits to residents and visitors by increasing public safety, supporting health and the environment, expanding choices for mobility, and growing the economy and tourism in local communities throughout the region.

### WHY IT MATTERS

Every **\$1.00** of greenway trail construction supports **\$1.72 annually<sup>1</sup>** from local business revenue, sales tax revenue, and benefits related to health and transportation.

**26%** of adults in North Carolina have not exercised in the last month<sup>2</sup>; this Plan will improve health and wellness by increasing access to bikeways

**264** crashes **5** fatalities  
There were **264 reported bicycle crashes and 5 bicyclist fatalities<sup>3</sup>** in the Yadkin Valley Region, from 2007-2015.

### WHAT WE HEARD

**190+** Total survey respondents **85%** say it's very important to create more bikeways and greenways in their community.

**63%** are uncomfortable bicycling in the street with cars.

**70-85%** would be very likely to bike more often if there were more greenways, separated bicycle lanes, and shared-use paths.

### RECOMMENDATIONS



1. "Evaluating the Economic Contribution of Shared Use Paths in NC" (2018). Institute for Transportation Research and Education.  
 2. "America's Health Rankings Annual Report." (2016). United Health Foundation and the American Public Health Association.  
 3. "North Carolina Pedestrian and Bicycle Crash Data Tool" (2007-2015). NCDOT Integrated Mobility Division

# YADKIN COUNTY



MAY 2020  
DRAFT

## REGIONAL NETWORK & PRIORITY PROJECTS

The plan includes long-term visionary projects that will positively impact multiple communities in the region, as well as locally-focused projects that aim to improve safety and connectivity in the short-term.

These top projects meet a variety of important prioritization criteria that are commonly used to rank potential bicycle and greenway projects across the state by NCDOT and other funding agencies.

Additional maps and project descriptions are included at the end of Chapter 3, featuring a more comprehensive network of all recommended bicycle facilities in the region, building upon these top projects.

### EXISTING

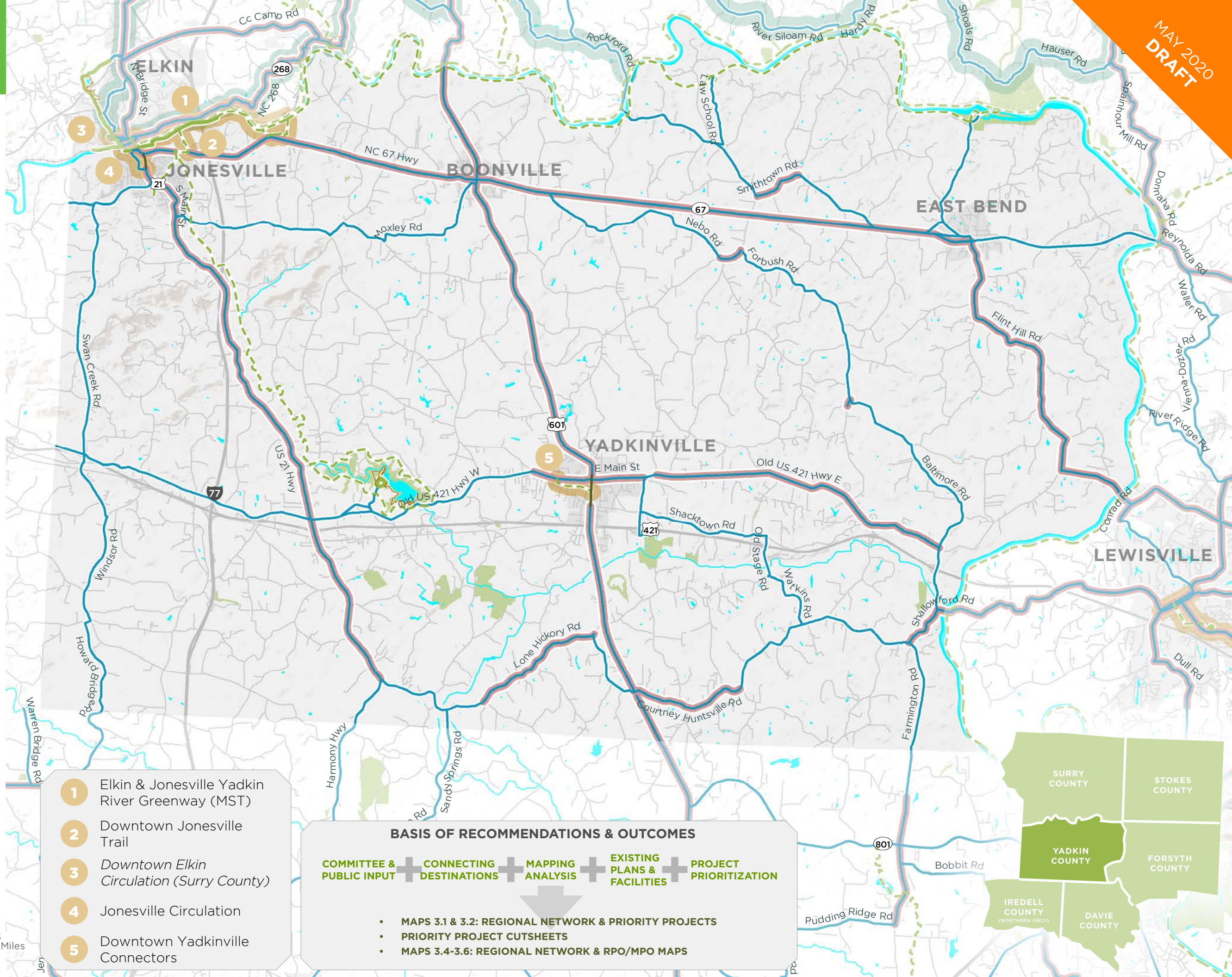
- Shared Use Path
- Bike Lane
- Hiking/MTB Trail
- Municipal Boundaries
- Protected Lands
- Surry Scenic Bikeway
- Railroad

### PROPOSED

- Bicycle Facility Improvement
- Shared Use Path
- Priority Project

### ADDITIONAL CONSIDERATIONS

- Greater concern for all ages and abilities of bicyclists, generally due to traffic volumes/speeds, pavement width, truck route, and/or sight lines



- 1** Elkin & Jonesville Yadkin River Greenway (MST)
- 2** Downtown Jonesville Trail
- 3** Downtown Elkin Circulation (Surry County)
- 4** Jonesville Circulation
- 5** Downtown Yadkinville Connectors

### BASIS OF RECOMMENDATIONS & OUTCOMES

COMMITTEE & PUBLIC INPUT + CONNECTING DESTINATIONS + MAPPING ANALYSIS + EXISTING PLANS & FACILITIES + PROJECT PRIORITIZATION

- MAPS 3.1 & 3.2: REGIONAL NETWORK & PRIORITY PROJECTS
- PRIORITY PROJECT CUTSHEETS
- MAPS 3.4-3.6: REGIONAL NETWORK & RPO/MPO MAPS

